

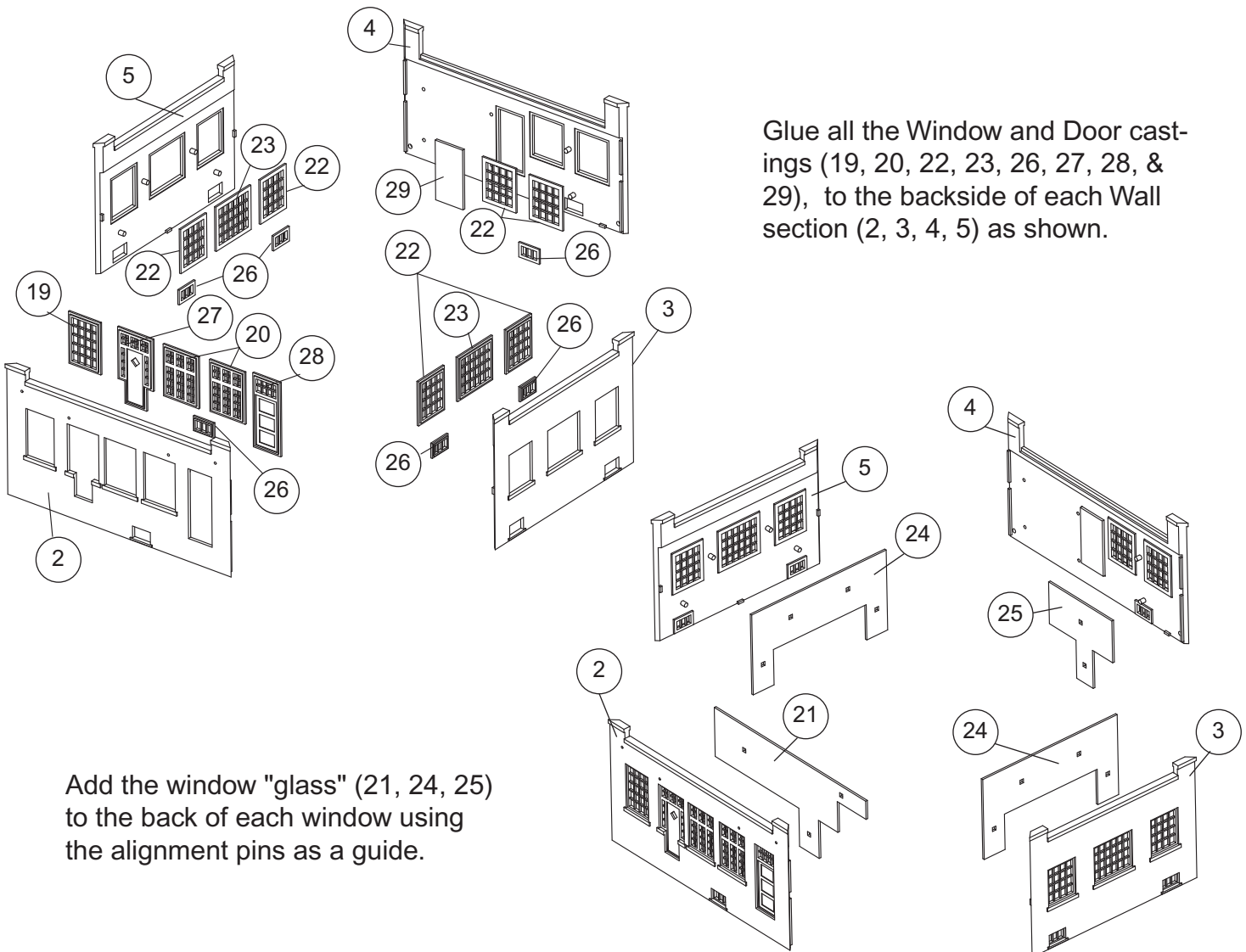


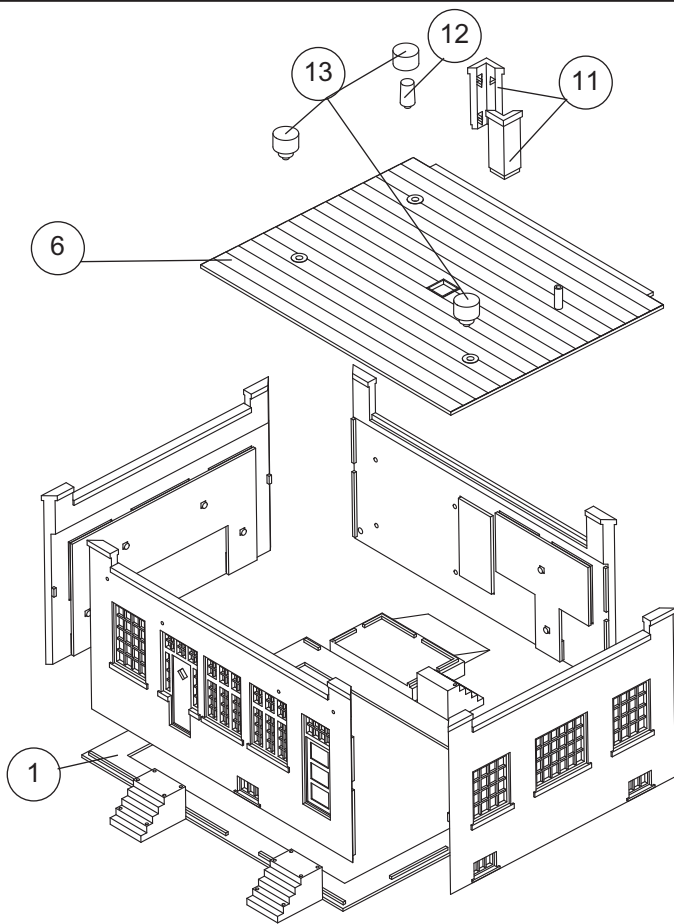
HO Structure Kit INDUSTRY OFFICE 933-4020

Thanks for purchasing this Cornerstone Series® kit. Please read all instructions before starting. All parts are molded in styrene plastic, so use compatible paints and glues to finish your model.

Most industries started out with offices and operations under one roof. But as space was needed for expansion, separate office buildings became common. Despite their small size, no other building on the property did as much work under one roof as the office. Unlike manufacturing facilities that had to be built in a specific location, the office could be placed wherever it was accessible to salesmen, job applicants and other visitors. Many faced a main street, and had their own parking lot or entrance gate. Due to their high visibility, they were designed to inspire confidence and often constructed of brick with dignified trim elements. This also required they be remodeled fairly often to keep them looking modern. Based on a Milwaukee Road prototype used as a yard office, this building is ideal for any large industrial complex, such as a brewery, steel works and more. By itself, it can also be used as a small business.

For additional items to detail your scene, stop by your local hobby shop, visit us online at waltherscornerstone.com, or see the latest Walthers Model Railroad Reference Book.



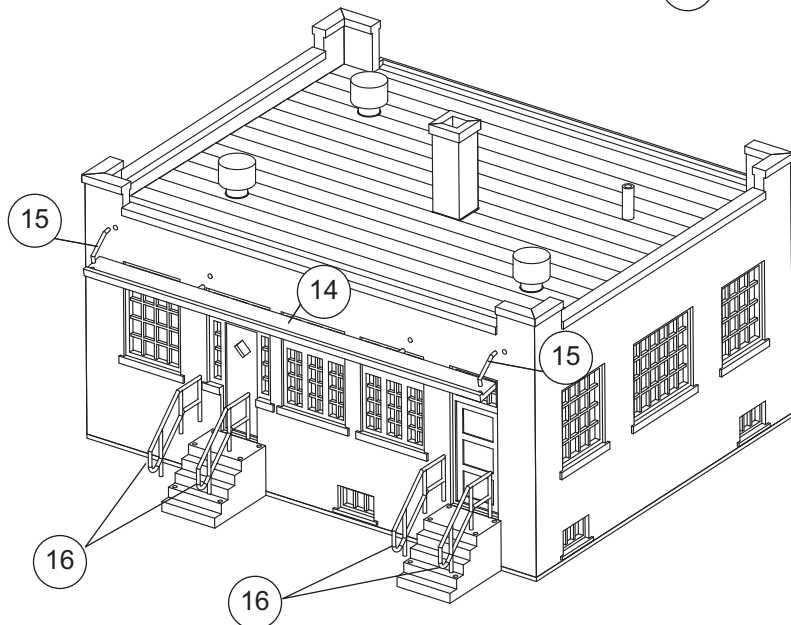
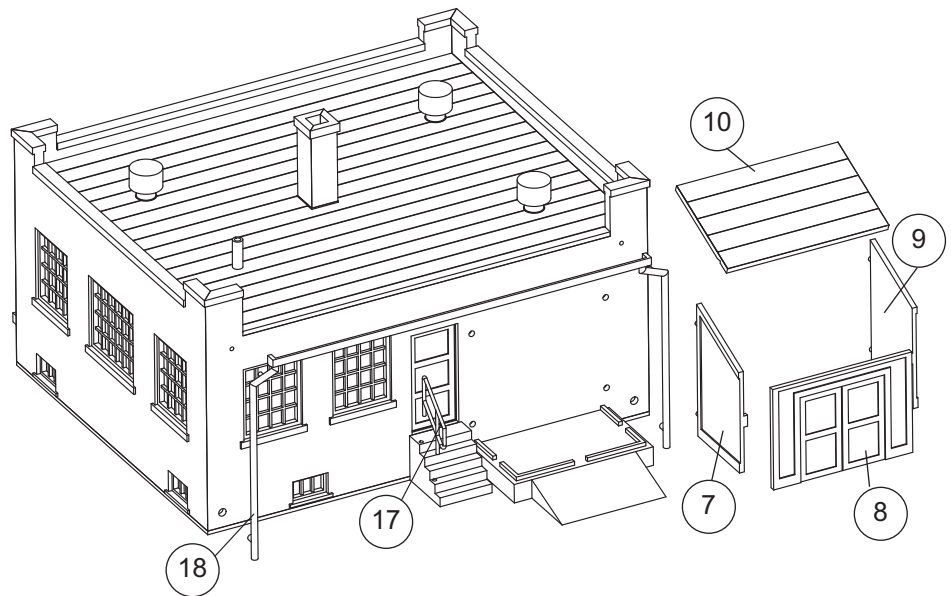


Glue the four wall sections to the Base (1).

Assemble both halves of the Chimney (11), along with Upper (13) and Lower (12) Ventilator parts. Glue these details to the Roof (6), then attach the roof to the model.

Glue the Shed Annex (7, 8, 9, 10) as illustrated to the Base. Rain Gutter assembly (18) is glued to the rear wall. Install Railings (16, 17) to each staircase on the front and rear of the model.

Finally, glue both Canopy Brackets (15) to the Canopy (14) and add this assembly to the front wall.



DECALING

1. After cutting out the decal, dip in water for 10 seconds, remove and let stand for 1 minute. Slide decal onto surface, position and then blot off any excess water.
2. Lightly brush Micro Sol® on top. This will soften the decal allowing it to conform to irregular surfaces. **DO NOT TOUCH DECAL** while wet!
3. When the decal is thoroughly dry, check for any trapped air bubbles. Prick them with the point of a small pin or hobby knife blade and apply more Micro Sol®.